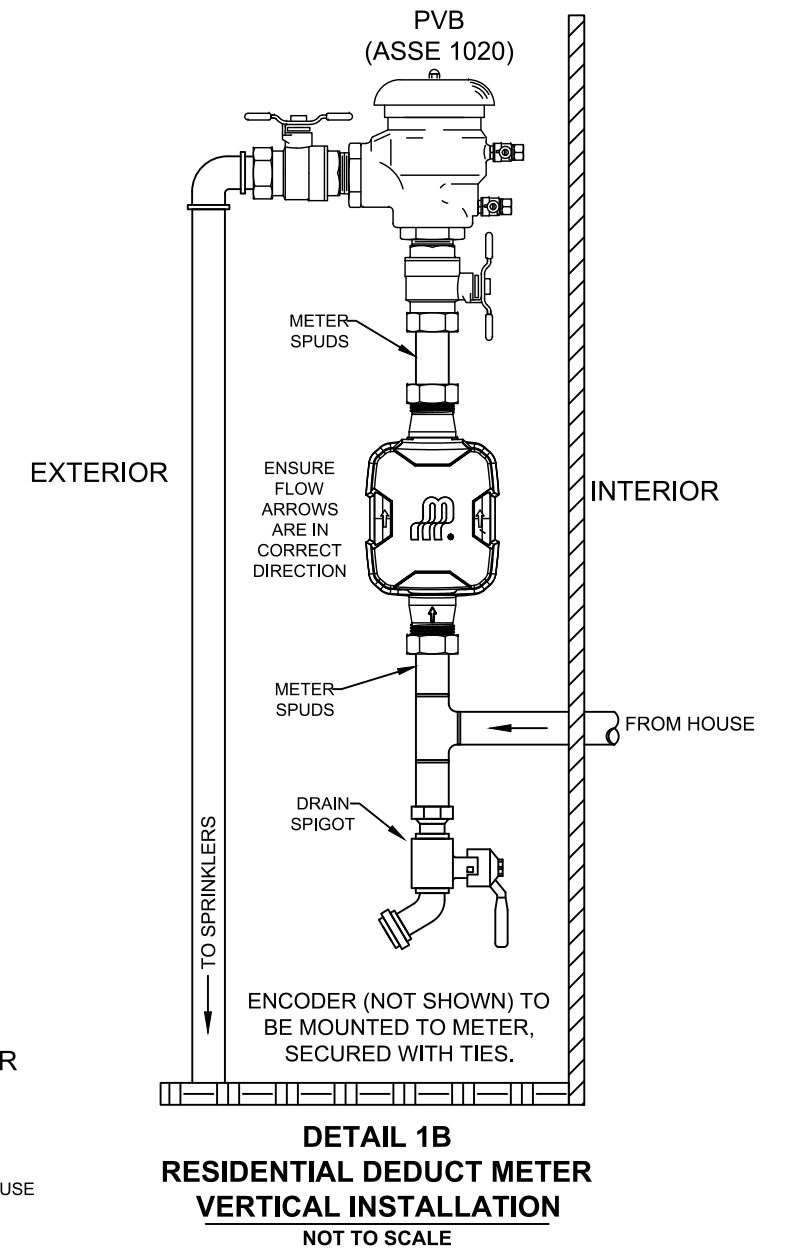
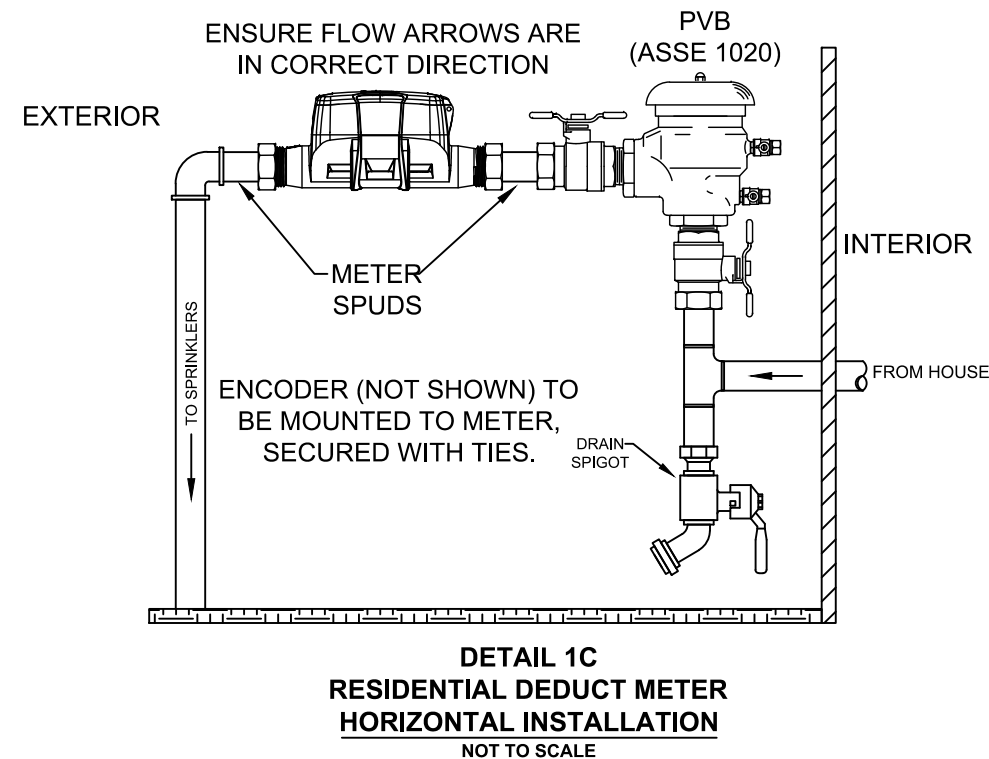
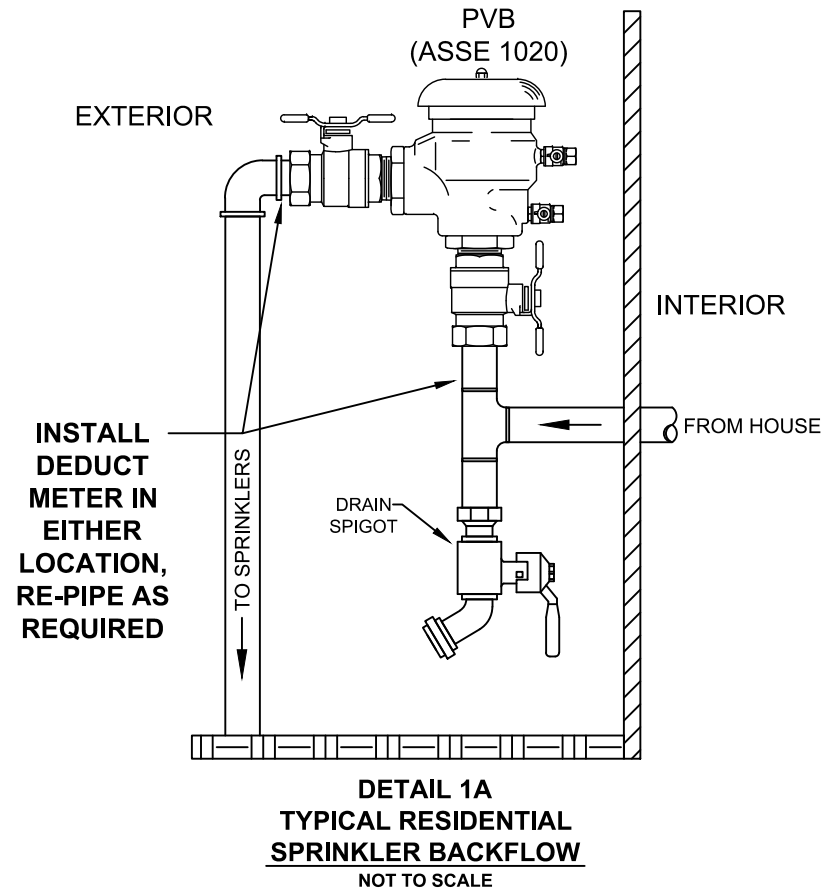


1. DEDUCT METERS ARE FOR NON-SEWERED OUTSIDE WATER USE ONLY SUCH AS IRRIGATION SPRINKLER SYSTEMS, EXTERIOR CLEANING, WATER PRESSURE CLEANING, WATERING OF PLANTS, TREES AND GRASS, SWIMMING POOLS AND OTHER RECREATIONAL WATER DEVICES, AND WASHING OF CARS, AND IS FOR SANITARY SEWER BILLING PURPOSES AND ALL WATER FLOWING THROUGH THIS METER SHALL BE DEDUCTED FROM THE CALCULATION OF THE CUSTOMER'S SEWER BILL.
2. AVON LAKE REGIONAL WATER, UPON PAYMENT IN FULL, WILL SUPPLY DEDUCT METER AND SPUDS TO CUSTOMER FOR INSTALLATION BY THEMSELVES OR A REGISTERED PLUMBER WHICH SHALL BE REGISTERED WITH THE CITY OF AVON LAKE AND POSSESS THE REQUIRED BONDING.
3. ONCE THE INSTALLATION HAS BEEN MADE, CONTACT AVON LAKE REGIONAL WATER AT 440-933-6226, OPTION 1 TO SCHEDULE AN INSPECTION TO DOCUMENT THE INSTALLATION. AN INSPECTION OF FLOW DIRECTION, METER LOCATION, AND INITIAL METER READING MUST BE MADE BEFORE ANY CREDIT FOR OUTSIDE WATER USAGE IS GRANTED.
4. DEDUCT METER SHALL BE SUPPLIED BY AVON LAKE REGIONAL WATER. METERS AVAILABLE IN 3/4", 1", OR 2" SIZES ONLY.
5. FOR LAWN IRRIGATION SYSTEMS, DEDUCT METER SHALL HAVE PRESSURE VACUUM BREAKER PER ASSE 1020 AND SHALL BE TESTABLE.
6. DEDUCT METER CAN BE INSTALLED IN VERTICAL OR HORIZONTAL PLANE. SEE DETAILS 1B AND 1C FOR TYPICAL INSTALLATIONS.
7. HOMEOWNER OR REGISTERED PLUMBER TO CUT INTO AND INSTALL A TEE OF SIMILAR SIZE TO THE WATER SERVICE LINE FOR THE DEDUCT METER LINE ANYWHERE DOWNSTREAM OF (AFTER) THE DOMESTIC WATER METER. METER & ALL DOWNSTREAM PIPING SHALL BE EXTERIOR TO THE HOME.
8. NO PIPE OR CONNECTION SHALL BE BLACK PIPE OR FITTINGS THAT CAN RUST.
9. METERS MUST BE PROPERLY SUPPORTED WITH SUPPORTS OR CLAMPS TO PREVENT ACCIDENTAL BREAKAGE. CUSTOMER SHALL BE RESPONSIBLE FOR COSTS ASSOCIATED WITH REPAIRS OR REPLACEMENT.
10. THE INCOMING WATER LINE MUST HAVE ONE (1) BALL VALVE ON EACH SIDE OF THE DEDUCT METER. STREET-SIDE TURN-OFF TO BE PLACED BEFORE PVB.
11. THE DEDUCT METER AND PVB MUST BE PROPERLY WINTERIZED TO PREVENT FREEZING DAMAGE. CUSTOMER TO ASSUME ALL COSTS OF ANY REPAIR/REPLACEMENT ARISING FROM IMPROPER WINTERIZATION.
12. THE DEDUCT METER IS INTENDED FOR NON-POTABLE WATER APPLICATIONS, EXTERIOR USE AND ROUTING ONLY. IT SHALL NOT BE ROUTED BACK THROUGH THE BUILDING FOR ANY REASON. ALL PIPE AND CONDUIT FROM THE DEDUCT METER TO THE LAST SPRINKLER HEAD OR TERMINUS POINT OF THE OUTSIDE SYSTEM SHALL BE EXTERNAL TO THE BUILDING AND SUBJECTED TO VERIFICATION BY ALRW.



METER THREADS: 3/4" METER: 1" x 11-1/2 NPSM  
1" METER: 1-1/4" x 11-1/2 NPSM

DRAWN: J.A.L.  
DATE: 3/15/2021  
REVISION: REV F 09/08/23  
APPROVED: J.R.G.

# EXTERIOR WATER DEDUCT METER

## PAGE 1 OF 3

I:\WATERDISTRIBUTION\METER DEDUCT\DEDUCT METER DRAWING.DWG

DRAWING NO. ALRW-WAT-37



**Avon Lake  
Regional Water**

Serving the region,  
protecting our resource.

### ENGINEERING DIVISION

201 MILLER ROAD  
AVON LAKE, OHIO 44012-1004  
PHONE: 440-933-6226, FAX: 440-933-2843  
www.avonlakewater.org

A

B

C

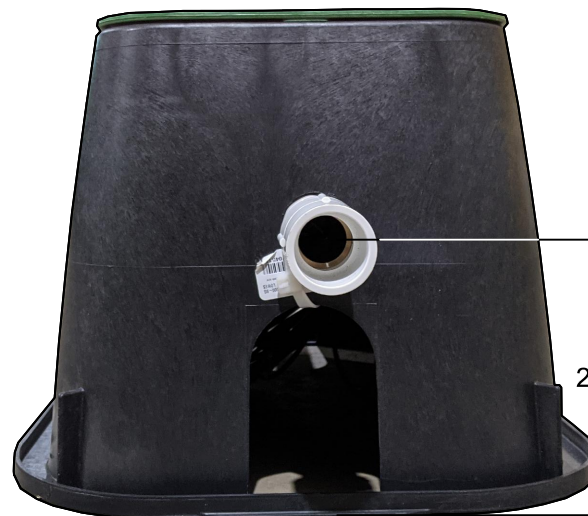
D

2" HOLE MUST BE CUT PRIOR TO ALRW INSPECTION

HOLE SAW 2" DIAMETER OPENING FOR ENCODER. LOCATE HOLE IN CORNER OF BOX AWAY FROM METER BODY. ENCODER TO BE SUPPLIED & INSTALLED BY ALRW AFTER INSPECTION IS APPROVED.

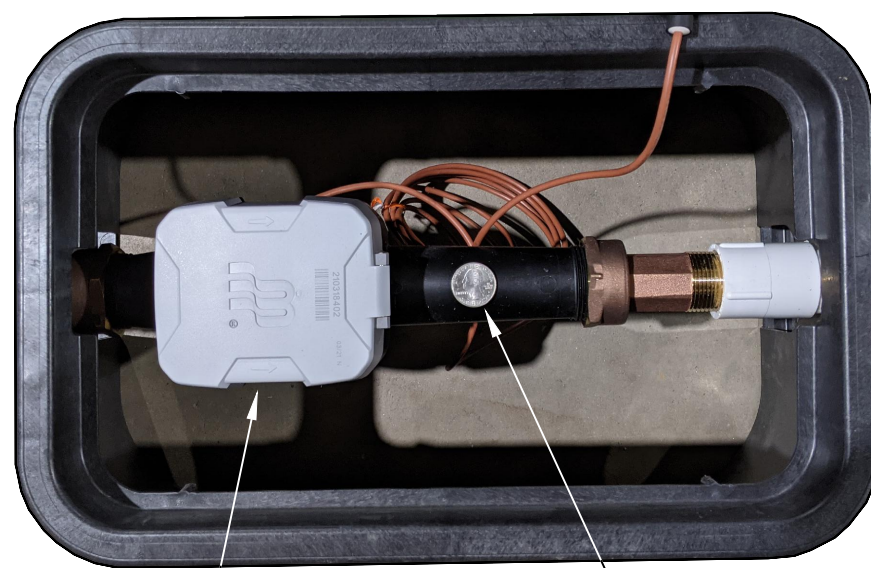


TOP VIEW,  
COVER ON



2" MINIMUM OFF GROUND

SIDE VIEW



DEDUCT  
METER

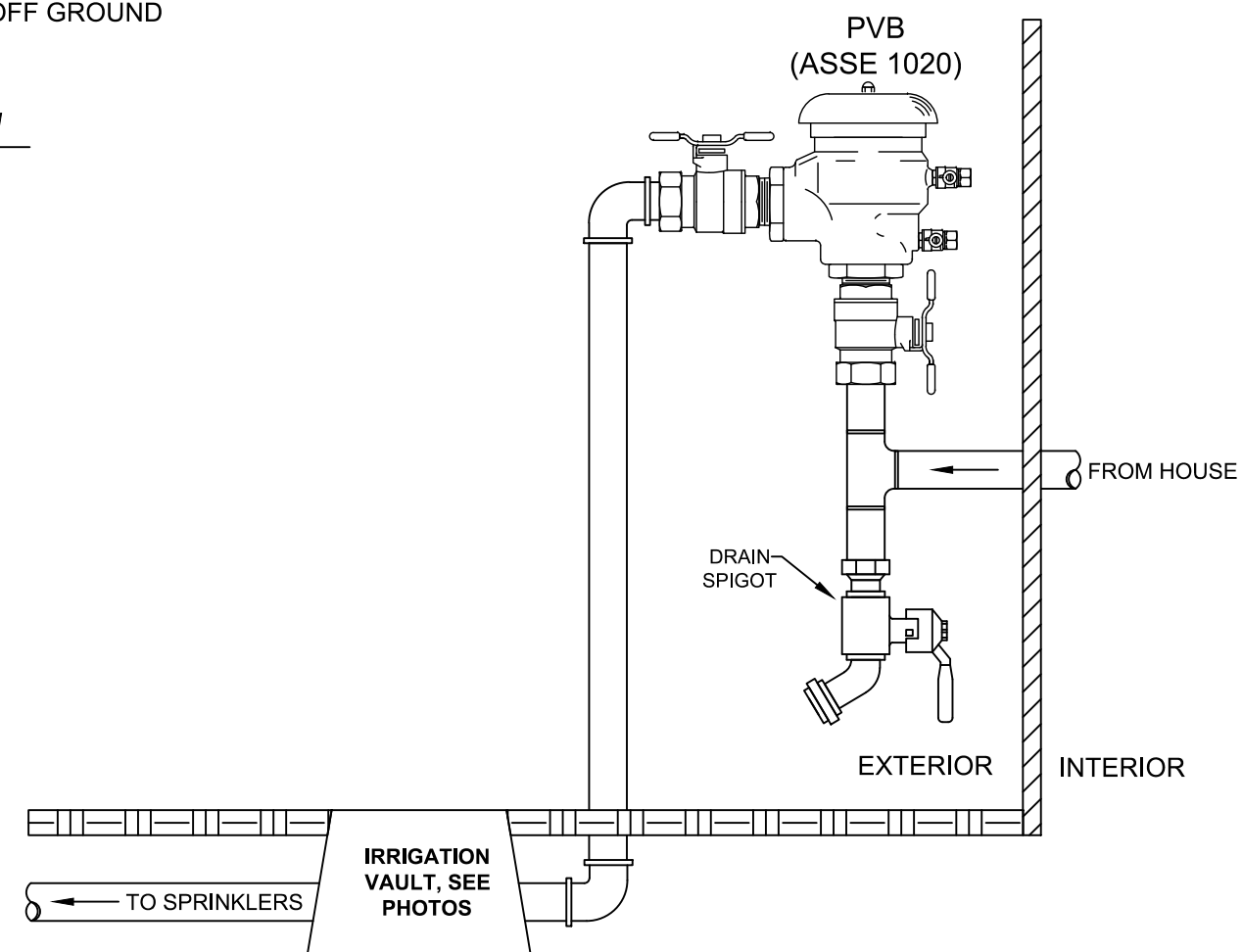
TOP VIEW,  
COVER OFF

QUARTER, FOR  
SCALE



FRONT VIEW

SHOWN: NDS 10"x15" VALVE BOX, MODEL D1000-SG  
SUGGESTED SUPPLIERS: LOWE'S, HOME DEPOT, MENARDS



DETAIL 1D  
DEDUCT METER IRRIGATION  
VAULT INSTALLATION  
NOT TO SCALE

DRAWN: J.A.L.  
DATE: 3/15/2021  
REVISION: REV F 09/08/23  
APPROVED: J.R.G.

I:\WATERDISTRIBUTIONMETER DEDUCT\DEDUCT METER DRAWING.DWG

# EXTERIOR WATER DEDUCT METER

## PAGE 2 OF 3

DRAWING NO. ALRW-WAT-37



**Avon Lake  
Regional Water**

Serving the region,  
protecting our resource.

**ENGINEERING DIVISION**

201 MILLER ROAD  
AVON LAKE, OHIO 44012-1004  
PHONE: 440-933-6226, FAX: 440-933-2843  
www.avonlakewater.org



A

B

C

D

INTERIOR

EXTERIOR

DEDUCT METER

SECURE DEDUCT METER TO HOUSE  
WITH PIPE STRAPS OR HANGERS.

TOP VIEW

LEAVE FAUCET OPENED TO  
KEEP DEDUCT METER FILLED  
AND PRESSURIZED, EXCEPT  
WHEN WINTERIZING SYSTEM.

IF FAUCET DOES NOT HAVE BUILT IN BACKFLOW  
PREVENTION (ASSE 1019) THEN A SEPARATE  
VACUUM BREAKER (ASSE 1011) MUST BE  
INSTALLED PRIOR TO THE DEDUCT METER.

OPEN AND CLOSE FAUCET  
FOR OUTSIDE WATER USAGE.

METER  
SPUDS

DEDUCT METER

BENDS AS REQUIRED

SIDE VIEW

DEDUCT METER MUST BE RIGIDLY PIPED (NO FLEXIBLE HOSE),  
METER SHALL NOT BE MOVED AROUND TO DIFFERENT FAUCETS.

**DETAIL 2**  
**EXTERIOR FAUCET DEDUCT**  
**METER INSTALLATION**  
NOT TO SCALE

BACKFLOW PREVENTION DEVICE

BALL VALVES ON BOTH  
SIDES OF DEDUCT METER



SEE NOTE 7 ON PAGE 1

WATER  
MAIN  
CURB  
STOP

DOMESTIC  
METER

**DETAIL 3**  
**PLUMBING SCHEMATIC FOR**  
**DEDUCT METER INSTALLATION**  
NOT TO SCALE

TEE CAN BE PLACED ANYWHERE  
AFTER THE DOMESTIC METER

DEDUCT  
METER

TO OUTSIDE

TO HOUSE

**DETAIL 4**  
**OPTIONAL METER SETTER,**  
**FORD "COPPERHORN" TYPE**  
NOT TO SCALE

DRAWN: J.A.L.  
DATE: 3/15/2021  
REVISION: REV F 09/08/23  
APPROVED: J.R.G.

I:\WATERDISTRIBUTION\METER DEDUCT\DEDUCT METER DRAWING.DWG

# EXTERIOR WATER DEDUCT METER

## PAGE 3 OF 3

DRAWING NO. ALRW-WAT-37



**Avon Lake**  
**Regional Water**

Serving the region,  
protecting our resource.

ENGINEERING DIVISION

201 MILLER ROAD  
AVON LAKE, OHIO 44012-1004  
PHONE: 440-933-6226, FAX: 440-933-2843  
www.avonlakewater.org